

TABLE OF CONTENTS

1. INTRODUCTION02
2. EXECUTIVE SUMMARY03
3. SOLUTION OUTLINE04
4. EXECUTION TIMELINE
5. PROJECT COSTS
6. ON-GOING FEES
7. TERMS OF AGREEMENT

PROPOSAL

This proposal is prepared by Gemini Consulting & Services for providing SAP solution.

INTRODUCTION

Gemini Consulting & Services is CMMI Level 3, ISO 20000 & 270001: 2013 certified company. We have successfully made to the Inc. 5000 list three times in a row by meeting the specified criteria of quality requirements ensured for your success based on their knowledge of leading technologies, industry best practices and best in class service delivery methodology & tools. Guided by goodwill and technical expertise of experienced lead, a team of well qualified professionals deliver exemplary services in terms of enterprise computing.

We take pride on being one of the major players providing IT consulting services in the Midwest region. GCS provides convenience through reliability, efficiency, and quality. The highly skilled professionals with years of experience are proficient enough to tackle any kind of predicaments. Our in-house talent includes domain experts, highly qualified graduates from top engineering and business schools, and professionals with years of industry experience under their belt.

Gemini being started by Professional Certified IT professionals in SAP and Banking Domain believes in transformation of your ideas into new products and services through leading edge technology proficiency and business domain comprehension. The conception of “Gemini” was developed by best and the brightest in the field of IT consulting, Banking, Politics and Human Resources consulting to provide innumerable services under one roof to its clients. We provide enterprises with planned insights on what lies ahead. It offers services in Application Development and Maintenance, Enterprise Solutions including Managed Services and Business Process Outsourcing to enterprise in the Financial Services, Travel & Transportation, Manufacturing/Distribution, and Government sectors.

Team Gemini has built the company on the unique and cornerstone principle that software application providers should take responsibility for the ongoing results and business process improvement of their customers. Put differently, we don’t move on after the implementation like other vendors; instead, we remain actively aligned with your business through ongoing communication and collaboration. Team Gemini is single-minded about achieving excellence.

EXECUTIVE SUMMARY

SAP is a packaged business software system that allows a company to automate and integrate the majority of its business processes, to share common data and practices across the entire enterprise, and to produce and access information in a real-time environment. It enables decision-makers to have an enterprise-wide view of the information they need in a timely, reliable and consistent fashion.

SAP provides the backbone for an enterprise-wide information system. At the core of this enterprise software is a central database which draws data from and feeds data into modular applications that operate on a common computing platform, thus standardizing business processes and data definitions into a unified environment. With SAP solution, data need to be entered only once. Moreover, the system provides consistency and visibility or transparency across the entire enterprise.

The figure below shows how SAP shares information across the entire enterprise and multiple modules by using a central database.



Company with SAP Implementation

This simplified illustration makes it seem that ERP is a simple process, but the fact that information must be assimilated into all parts of a business means that a lot of thought must go into an ERP software package. Moreover, an ERP software package provides all the information for every department in an organization to make a product.

Our team of experts maintain a greater degree of quality standards & is certified with ISO 9001:2015 & have successfully made to the Inc. 5000 list three times in a row by meeting the specified criteria of quality requirements ensured for your success based on their knowledge of leading technologies, industry best practices and best in class service delivery methodology & tools.

WHY SAP SOLUTIONS

Starting in 1970, SAP has evolved catering to business challenges and leveraging emerging technologies of the time. 2011 was one of the key milestones and start of a new era in SAP landscape with emergence of SAP HANA.

As an SAP Implementation partner, Gemini has been involved in observing, learning and applying this evolution to meet the needs of our customers. Starting with HANA for analytics

and now with the introduction of S/4 Finance and S/4 HANA Enterprise Management Gemini team is in the forefront of the innovation, advising our clients on value proposition, technology roadmap and implementations. We support you to make decisions on when to migrate, which version or if it's best to re-implement on the new platform. We work collaboratively, yet independently from SAP to provide advice that best suits your interests and business needs.

SOLUTION OUTLINE

SAP CAPABILITIES:

- Implementation/ Custom Development - End-To-End Implementation
 - Re- Configured Templates
 - Business Process Maps
 - Re-Usable Components
 - Strong ABAP, Workflows
- Net Weaver - Process Integration
 - Enterprise Portal
 - Master Data Management
 - Mobile Infrastructure
 - Knowledge Management
 - Business Intelligence
- Administration - 24/7 PRD Support Activities (System Monitoring, Kernel Upgrade, Support Patches, System Copy, and Performance Analysis, etc.)
 - Implementation of ECC & NW Comp.
 - OS/DB Migrations
 - Version Upgrades (ECC and NW)
 - SAP HANA Admin and Support
- Analytics (BI/BO/HANA) - Planning Assessment
 - Architecture services
 - Road map assessment
 - SAP Mobile Analytics
 - Cross functions rapid deployment solutions
 - Data volume optimization
 - Predictive analytics
 - Data Modelling and Design
 - Data Mining and Analytics
- IS Utilities - Device Management
 - Billing & Invoicing
 - Water Management
 - CRM

- Mobility - NW Gateways
Sybase Unwired Platform
Afria
Android
Apple IOs

- Upgrade and Migration -Release Upgrades
EHP Upgrades
OS/DB Migration
Data Center & Unicode Migration
Platform Virtualization

- Business Process Monitoring & Testing -
Enhancing the efficiency of implementing & changing management projects

Consolidated management of multi projects

Solution Manager to monitor business processes in real time

Manage, Monitor & Operate all the SAP solutions

Optimizing testing process

Managing custom codes

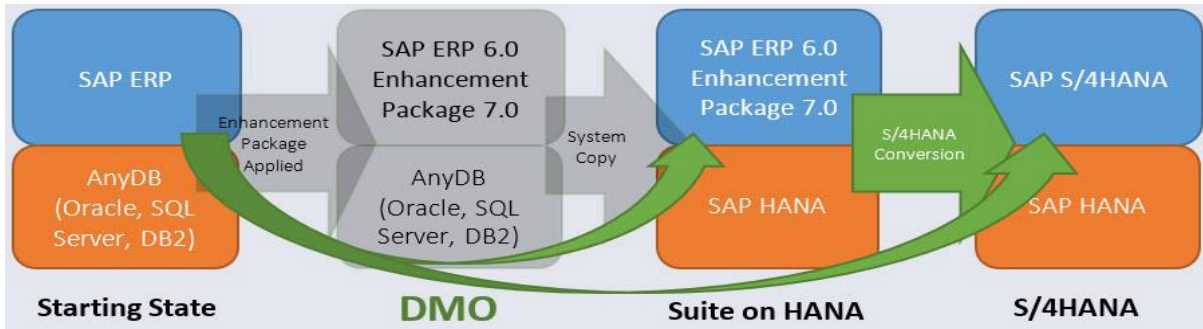
SAP MIGRATION TO S4 HANA

There have been multiple scenarios while it comes to SAP (ECC) ERP migration to SAP S/4 HANA. It is important to understand customers' current landscape and used functionalities and modules in current SAP landscape/system to determine the appropriate S/4 HANA migration scenario.

Determination of migration scenario is so important that based on this understanding only scope, team size and project valuation (bidding value) can be determined. For example, there could be multiple phases (sub projects) in one simple e.g. ECC6, EhP7 migration to S/4 HANA 1709.

Identification of appropriate migration scenario would help you finalizing following things:

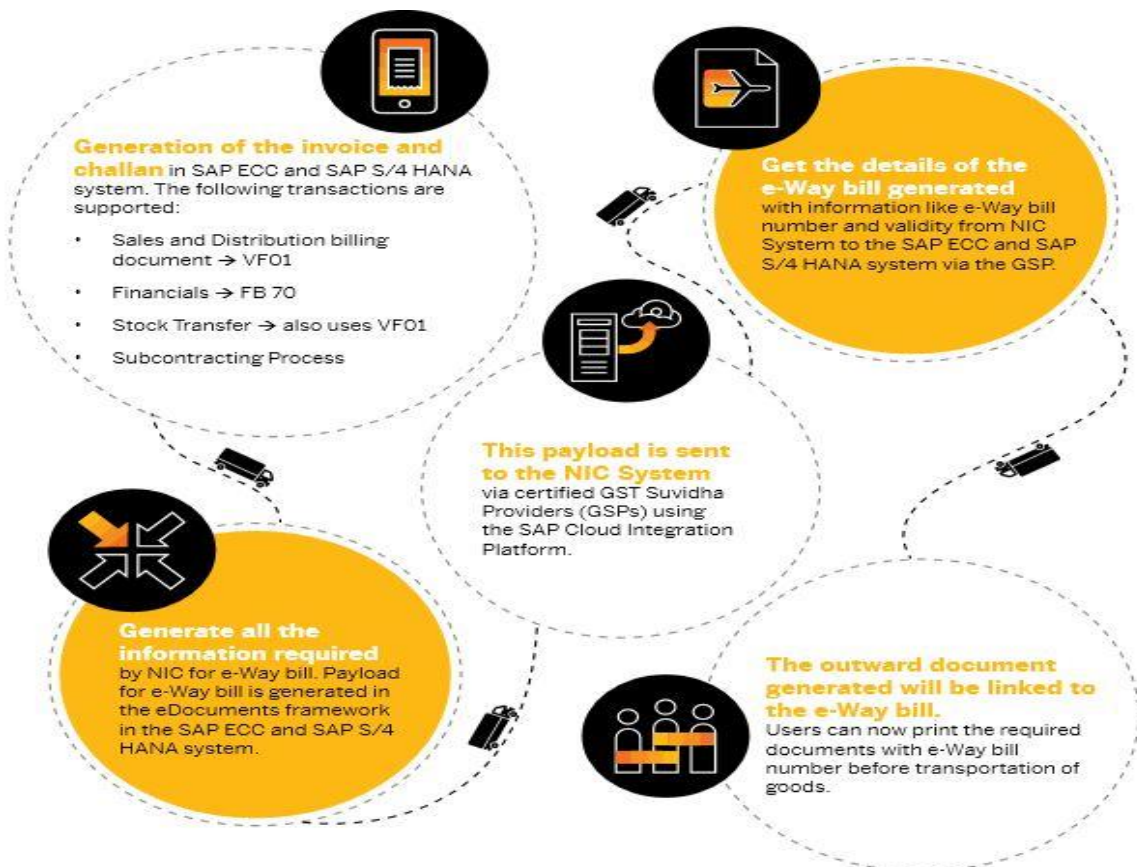
1. Magnitude of Work (Scope)
2. Number of Project Phases
3. Team Size Requirement
4. Project Amount (Bid Amount)



GST E-WAY BILL SOLUTION FROM SAP

The e-Way bill is an electronically generated document which is required for the movement of goods of value more than INR 50000, from one location to another. This document is generated online on the National Informatics Centre (NIC) portal for transportation of goods, both inter and intra state and includes details such as name of consignor, consignee, and point of origin of consignment, consignment destination and route. Goods and Services Tax (GST) regime has mandated the generation of the e-Way bill from 1st April 2018. This replaces the Way bill which was earlier required under the VAT regime.

The process involves a registered tax payer generating the e-Way bill for their outward supply document on the NIC. A unique e-Way bill number (EBN) is generated for each e-Way bill and it is available to the supplier, recipient and transporter.



GCS SAP AMS MANAGED SERVICES STACK

Get 24/7 application monitoring and support. With our application services, a team of SAP experts proactively detects and fixes potential problems, immediately responds to incidents, handles software maintenance, and helps drive continuous improvements across your solution landscape. Let us help you manage solutions such as SAP S/4HANA, SAP Fiori, SAP Success Factors, SAP HANA database.

- Continuously monitor the health of your SAP on- premise, cloud, and hybrid applications
- Get immediate response to events, trends, and developing situations – and fast remediation
- Use automated systems to proactively detect and fix problems and alert experts
- Prevent incidents that could negatively impact productivity, customer loyalty, or your bottom line
- Access a highly skilled team of consultants with deep solution knowledge and expertise
- Receive quantifiable insight into improvement potential for your systems and processes
- Improve application lifecycle management (ALM) – from application deployment to modernization

SAP UPGRADE OFFERINGS

GCS Offers End-to-End Solutions for All Kinds of Upgrades –

- Technical upgrade – enables the client to upgrade the system without changing the current functionality
- Functional upgrade – enables the client to use the latest functionality available
- Value upgrade – enables the client to reengineer process, use new modules, new dimension products and industry solutions

GCS Ensures Upgrades –

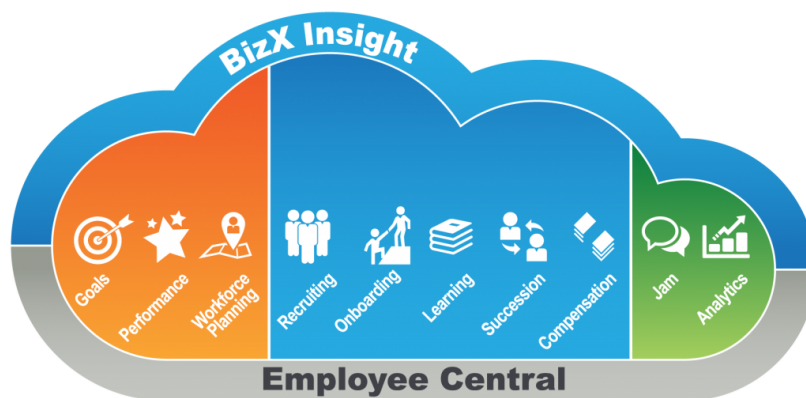
- At lower cost by using proven methodologies, repository & accelerators
- At lower financial risk by doing it at fixed price
- At lower turnaround time using screening tool and flexible use of resources

By Enabling –

- Support and control of the total upgrade process
- Ensured quality of products and services
- Reduction of time and costs

SAP SUCCESS FACTOR

SAP Success Factors is a major vendor of cloud-based human capital management (HCM) software and talent management software. SAP Success Factors has long been best known for its talent management suite and seen as an innovator in the segment, which has grown steadily since the company's founding to become a major component of HR technology.



STRENGTHS IN SAP HANA

Gemini Consulting Services (GCS) has HANA Competency with experience range over 4 years in HANA administration, HANA Analytics, and HANA Centric Development.

Services –

- SAP HANA Migration
- SAP HANA on ECC (HANA ABAP Developments)
- SAP HANA on BW (BI&BO Reporting migration)
- SAP Native HANA
- SAP S/4 HANA (Simple Finance)
- SAP HANA Cloud Platform (Human Resources, Finance)
- SAP HANA Support Services

GCS Hana Team –

- Solution Architect
- Senior Consultants

- Consultants

GCS SAP FIORI OFFERINGS

SAP Fiori is a new user experience (UX) for SAP software and applications. It provides a set of applications that are used in regular business functions like work approvals, financial apps, calculation apps and various self-service apps.

SAP Fiori provides 300+ role-based applications like HR, Manufacturing, finance, etc.

SAP Fiori provides all business roles in real time on compatible hand devices. It offers business roles on easy to use functions, simple with unmatched responsiveness on desktop, smartphones and Tablets.

SAP Fiori enables multiple device applications that allow users to start a process on their desktop/laptops and to continue that process on a smartphone or on a tablet. SAP has developed Fiori Apps based on User interface UI5.

